

Catalogue

Distribution product

Wenzhou Xucky Electric Co.,Ltd

www.xucky.com



**Industrial Plug&Socket&Weather Protected&Isolating Switch
Portable Powerhouse Boards&Distribution Box**

PC Plug Socket Coupling

1. Technical data

	Model	Poles	Voltage	Amp		Model	Poles	Voltage	Amp
	012	 2P	220V-250V~	16A			123-4	 2P+E	110V-130V~ 32A
	013-4	 2P+E	110V-130V~	16A			123	 2P+E	220V-250V~ 32A
013/023	013	 2P+E	220V-250V~	16A	123 / IP67		124	 3P+E	380V-415V~ 32A
	014	 3P+E	380V-415V~	16A			125	 3P+N+E	240V-415V~ 32A
	015	 3P+N+E	220V-380V	16A		133	 2P+E	220V-250V~ 63A	
014/024	023-4	 2P+E	110V-130V~	32A	115/125		134	 3P+E	380V-415V~ 63A
	023	 2P+E	220V-250V~	32A			135	 3P+N+E	220V-380V~ 63A
	024	 3P+E	380V-415V~	32A		143	 2P+E	220V-250V~ 125A	
034/044	025	 3P+N+E	240V-415V~	32A	133/143		144	 3P+E	380V-415V~ 125A
	033	 2P+E	220V-250V~	63A			145	 3P+N+E	240V-415V~ 125A
	034	 3P+E	380V-415V~	63A		213-4	 2P+E	110V-130V~ 16A	
113/123	035	 3P+N+E	220V-380V~	63A	135/145		213	 2P+E	220V-250V~ 16A
	043	 2P+E	220V-250V~	125A			214	 3P+E	380V-415V~ 16A
	044	 3P+E	380V-415V~	125A		215	 3P+N+E	240V-415V~ 16A	
114/124	045	 3P+N+E	240V-415V~	125A	214/224		223-4	 2P+E	110V-130V~ 32A
	113-4	 2P+E	110V-130V~	16A			223	 2P+E	220V-250V~ 32A
	113	 2P+E	220V-250V~	16A		224	 3P+E	380V-415V~ 32A	
113-4/123-4	114	 3P+E	380V-415V~	16A	233/243		225	 3P+N+E	240V-415V~ 32A
	115	 3P+N+E	220V-380V~	16A		233	 2P+E	220V-250V~ 63A	

PC Plug Socket Coupling

	Model	Poles	Voltage	Amp		Model	Poles	Voltage	Amp
 235/245	234	 3P+E	380V-415V~	63A	 413/423	413	 2P+E	220V-250V~	16A
	235	 3P+N+E	220V-380V~	63A		414	 3P+E	380V-415V~	16A
	243	 2P+E	220V-250V~	125A		415	 3P+N+E	220V-380V~	16A
	244	 3P+E	380V-415V~	125A		423-4	 2P+E	110V-130V~	32A
 313/323	245	 3P+N+E	240V-415V~	125A	 415/425	423	 2P+E	220V-250V~	32A
	313-4	 2P+E	110V-130V~	16A		424	 3P+E	380V-415V~	32A
	313	 2P+E	220V-250V~	16A		425	 3P+N+E	240V-415V~	32A
 313-4/323-4	314	 3P+E	380V-415V~	16A	 513/523	513	 2P+E	220V-250V~	16A
	315	 3P+N+E	220V-380V~	16A		514	 3P+E	380V-415V~	16A
	323-4	 2P+E	110V-130V~	32A		515	 3P+N+E	220V-380V~	16A
	323	 2P+E	220V-250V~	32A		523	 2P+E	220V-250V~	32A
 333/343	324	 3P+E	380V-415V~	32A	 514/524	524	 3P+E	380V-415V~	32A
	325	 3P+N+E	220V-380V~	32A		525	 3P+N+E	240V-415V~	32A
	333	 2P+E	220V-250V~	63A		613	 2P+E	220V-250V~	16A
	334	 3P+E	380V-415V~	63A		614	 3P+E	380V-415V~	16A
 413-4/423-4	335	 3P+N+E	220V-380V~	63A	 614/624	615	 3P+N+E	220V-250V~	16A
	343	 2P+E	220V-250V~	125A		623	 2P+E	220V-250V~	32A
	344	 3P+E	380V-415V~	125A		624	 3P+E	380V-415V~	32A
	345	 3P+N+E	220V-380V~	125A		625	 3P+N+E	240V~415V	32A
	413-4	 2P+E	110V-130V~	16A		0132	 2P+E	220V-250V~	16A
					0132/0232				

PC Plug Socket Coupling

	Model	Poles	Voltage	Amp		Model	Poles	Voltage	Amp
 0152/0252	0142	 3P+E	380V-415V~	16A	 2152/2252	2252	 3P+N+E	240-415V~	32A
	0152	 3P+N+E	220V-380V~	16A		013L-4	 2P+E	110V-130V~	16A
	0232	 2P+E	220V~250V~	32A		013L	 2P+E	220V-250V~	16A
	0242	 3P+E	380V~415V~	32A		014L	 3P+E	380V-415V~	16A
 1012-4	0252	 3P+N+E	240V-415V~	32A	 013L-4/023L-4	015L	 3P+N+E	220V-380V~	16A
	1012-4	 2P+E	220V~	16A		023L-4	 2P+E	110V-130V~	32A
	1012	 2P+E	220V~	16A		023L	 2P+E	220V-250V~	32A
	1013-4	 2P+E	220V~	16A		024L	 3P+E	380V-415V~	32A
 1013-4	1013	 2P+E	220V~	16A	 113L/123L	025L	 3P+N+E	240V-514V~	32A
	1132	 2P+E	220V-250V~	16A		113L-4	 2P+E	110V-130V~	16A
	1232	 2P+E	220V-250V~	32A		113L	 2P+E	220V-250V~	16A
	1142	 3P+E	380V-415V~	16A		114L	 3P+E	380V-415V~	16A
 1013	1242	 3P+E	380V-415V~	32A	 213L-4 / 223L-4	115L	 3P+N+E	240V-415V~	16A
	1152	 3P+N+E	220V-380V~	16A		123L-4	 2P+E	110V-130V~	32A
	1252	 3P+N+E	240V-415V~	32A		123L	 2P+E	220V-250V~	32A
	2132	 2P+E	220V-250V~	16A		124L	 3P+E	380V-415V~	32A
 1152/1252	2232	 2P+E	220V-250V~	32A	 214L/224L	125L	 3P+N+E	240V-415V~	32A
	2142	 3P+E	380V-415V~	16A		213L-4	 2P+E	110V-130V~	16A
	2242	 3P+E	380V-415V~	32A		213L	 2P+E	220V-250V~	16A
	2152	 3P+N+E	220V-380V~	16A		214L	 3P+E	380V-415V~	16A

PC Plug Socket Coupling

	Model	Poles	Voltage	Amp		Model	Poles	Voltage	Amp
 235/245	234	 3P+E	380V-415V~	63A	 413/423	413	 2P+E	220V-250V~	16A
	235	 3P+N+E	220V-380V~	63A		414	 3P+E	380V-415V~	16A
	243	 2P+E	220V-250V~	125A		415	 3P+N+E	220V-380V~	16A
	244	 3P+E	380V-415V~	125A		423-4	 2P+E	110V-130V~	32A
 313/323	245	 3P+N+E	240V-415V~	125A	 415/425	423	 2P+E	220V-250V~	32A
	313-4	 2P+E	110V-130V~	16A		424	 3P+E	380V-415V~	32A
	313	 2P+E	220V-250V~	16A		425	 3P+N+E	240V-415V~	32A
	314	 3P+E	380V-415V~	16A		513	 2P+E	220V-250V~	16A
 313-4/323-4	315	 3P+N+E	220V-380V~	16A	 513/523	514	 3P+E	380V-415V~	16A
	323-4	 2P+E	110V-130V~	32A		515	 3P+N+E	220V-380V~	16A
	323	 2P+E	220V-250V~	32A		523	 2P+E	220V-250V~	32A
	324	 3P+E	380V-415V~	32A		524	 3P+E	380V-415V~	32A
 333/343	325	 3P+N+E	220V-380V~	32A	 514/524	525	 3P+N+E	240V-415V~	32A
	333	 2P+E	220V-250V~	63A		613	 2P+E	220V-250V~	16A
	334	 3P+E	380V-415V~	63A		614	 3P+E	380V-415V~	16A
	335	 3P+N+E	220V-380V~	63A		615	 3P+N+E	220V-250V~	16A
 413-4/423-4	343	 2P+E	220V-250V~	125A	 614/624	623	 2P+E	220V-250V~	32A
	344	 3P+E	380V-415V~	125A		624	 3P+E	380V-415V~	32A
	345	 3P+N+E	220V-380V~	125A		625	 3P+N+E	240V~415V	32A
	413-4	 2P+E	110V-130V~	16A		0132	 2P+E	220V-250V~	16A
					 0132/0232				

PC Plug Socket Coupling

	Model	Poles	Voltage	Amp		Model	Poles	Voltage	Amp
 0152/0252	0142	 3P+E	380V-415V~	16A	 2152/2252	2252	 3P+N+E	240-415V~	32A
	0152	 3P+N+E	220V-380V~	16A		013L-4	 2P+E	110V-130V~	16A
	0232	 2P+E	220V~250V~	32A		013L	 2P+E	220V-250V~	16A
	0242	 3P+E	380V~415V~	32A		014L	 3P+E	380V-415V~	16A
 1012-4	0252	 3P+N+E	240V-415V~	32A	 013L-4/023L-4	015L	 3P+N+E	220V-380V~	16A
	1012-4	 2P+E	220V~	16A		023L-4	 2P+E	110V-130V~	32A
	1012	 2P+E	220V~	16A		023L	 2P+E	220V-250V~	32A
	1013-4	 2P+E	220V~	16A		024L	 3P+E	380V-415V~	32A
 1013-4	1013	 2P+E	220V~	16A	 113L/123L	025L	 3P+N+E	240V-514V~	32A
	1132	 2P+E	220V-250V~	16A		113L-4	 2P+E	110V-130V~	16A
	1232	 2P+E	220V-250V~	32A		113L	 2P+E	220V-250V~	16A
	1142	 3P+E	380V-415V~	16A		114L	 3P+E	380V-415V~	16A
 1013	1242	 3P+E	380V-415V~	32A	 213L-4 / 223L-4	115L	 3P+N+E	240V-415V~	16A
	1152	 3P+N+E	220V-380V~	16A		123L-4	 2P+E	110V-130V~	32A
	1252	 3P+N+E	240V-415V~	32A		123L	 2P+E	220V-250V~	32A
	2132	 2P+E	220V-250V~	16A		124L	 3P+E	380V-415V~	32A
 1152/1252	2232	 2P+E	220V-250V~	32A	 214L/224L	125L	 3P+N+E	240V-415V~	32A
	2142	 3P+E	380V-415V~	16A		213L-4	 2P+E	110V-130V~	16A
	2242	 3P+E	380V-415V~	32A		213L	 2P+E	220V-250V~	16A
	2152	 3P+N+E	220V-380V~	16A		214L	 3P+E	380V-415V~	16A

PC Plug Socket Coupling

	Model	Poles	Voltage	Amp		Model	Poles	Voltage	Amp
 0152/0252	0142	 3P+E	380V-415V~	16A	 2152/2252	2252	 3P+N+E	240-415V~	32A
	0152	 3P+N+E	220V-380V~	16A		013L-4	 2P+E	110V-130V~	16A
	0232	 2P+E	220V~250V~	32A		013L	 2P+E	220V-250V~	16A
	0242	 3P+E	380V~415V~	32A		014L	 3P+E	380V-415V~	16A
 1012-4	0252	 3P+N+E	240V-415V~	32A	 013L-4/023L-4	015L	 3P+N+E	220V-380V~	16A
	1012-4	 2P+E	220V~	16A		023L-4	 2P+E	110V-130V~	32A
	1012	 2P+E	220V~	16A		023L	 2P+E	220V-250V~	32A
	1013-4	 2P+E	220V~	16A		024L	 3P+E	380V-415V~	32A
 1013-4	1013	 2P+E	220V~	16A	 113L/123L	025L	 3P+N+E	240V-514V~	32A
	1132	 2P+E	220V-250V~	16A		113L-4	 2P+E	110V-130V~	16A
	1232	 2P+E	220V-250V~	32A		113L	 2P+E	220V-250V~	16A
	1142	 3P+E	380V-415V~	16A		114L	 3P+E	380V-415V~	16A
 1013	1242	 3P+E	380V-415V~	32A	 213L-4 / 223L-4	115L	 3P+N+E	240V-415V~	16A
	1152	 3P+N+E	220V-380V~	16A		123L-4	 2P+E	110V-130V~	32A
	1252	 3P+N+E	240V-415V~	32A		123L	 2P+E	220V-250V~	32A
	2132	 2P+E	220V-250V~	16A		124L	 3P+E	380V-415V~	32A
 1152/1252	2232	 2P+E	220V-250V~	32A	 214L/224L	125L	 3P+N+E	240V-415V~	32A
	2142	 3P+E	380V-415V~	16A		213L-4	 2P+E	110V-130V~	16A
	2242	 3P+E	380V-415V~	32A		213L	 2P+E	220V-250V~	16A
	2152	 3P+N+E	220V-380V~	16A		214L	 3P+E	380V-415V~	16A

PC Plug Socket Coupling

	Model	Poles	Voltage	Amp		Model	Poles	Voltage	Amp
 013n/023n	215L	 3P+N+E	220V-380V~	16A	 115n/125n	114n	 3P+E	380V-415V~	16A
	223L-4	 2P+E	110V-130V~	32A		115n	 3P+N+E	240V-415V~	16A
	223L	 2P+E	220V-250V~	32A		123n-4	 2P+E	110V-130V~	32A
	224L	 3P+E	380V-415V~	32A		123n	 2P+E	220V-250V~	32A
	225L	 3P+N+E	240V-514V~	32A		124n	 3P+E	380V-415V~	32A
 014n/024n	013n-4	 2P+E	110V-130V~	16A	 123n / IP44	125n	 3P+N+E	240V-415V~	32A
	013n	 2P+E	220V-250V~	16A		213n-4	 2P+E	110V-130V~	16A
	014n	 3P+E	380V-415V~	16A		213n	 2P+E	220V-250V~	16A
	015n	 3P+N+E	220V-380V~	16A		214n	 3P+E	380V-415V~	16A
 015n/025n	023n-4	 2P+E	110V-130V~	32A	 214n/224n	215n	 3P+N+E	220V-380V~	16A
	023n	 2P+E	220V-250V~	32A		223n-4	 2P+E	110V-130V~	32A
	024n	 3P+E	380V-415V~	32A		223n	 2P+E	220V-250V~	32A
	025n	 3P+N+E	240V-415V~	32A		224n	 3P+E	380V-415V~	32A
 013n-4/023n-4	113n-4	 2P+E	110V-130V~	16A	 105-02HC	225n	 3P+N+E	240V-415V~	32A
	113n	 2P+E	220V-250V~	16A		105-02HC	 2P+E	220V-250V~	16A



105-02HP



105-02HL



1132/1232 IP67

PC Plug Socket Coupling

	Model	Poles	Voltage	Amp		Model	Poles	Voltage	Amp						
	1301-4	2P+E	110V	16A		3321-4	2P+E	110V	32A						
	1301		230V			3321		230V							
	1301-9		400V			3321-9		400V							
	1401-4	3P+E	110V			16A		3421-4		3P+E	110V	32A			
	1401-9		230V					3421-9			230V				
	1401		400V					3421			400V				
	1501-4	3P+N+E	110V					16A			3521-4		3P+N+E	110V	32A
	1501-9		230V								3521-9			230V	
	1501		400V								3521			400V	
	3301-4	2P+E	110V	32A					6321-4		2P+E		110V	63A	
	3301		230V						6321				230V		
	3301-9		400V						6321-9				400V		
	3401-4	3P+E	110V			32A			6421-4		3P+E	110V	63A		
	3401-9		230V						6421-9			230V			
	3401		400V						6421			400V			
	3501-4	3P+N+E	110V					32A		6521-4	3P+N+E	110V			63A
	3501-9		230V							6521-9		230V			
	3501		400V							6521		400V			
	6301-4	2P+E	110V	63A						1361-4	2P+E	110V		16A	
	6301		230V							1361		230V			
	6301-9		400V							1361-9		400V			
	6401-4	3P+E	110V			63A				1461-4	3P+E	110V	16A		
	6401-9		230V							1461-9		230V			
	6401		400V							1461		400V			
	6501-4	3P+N+E	110V					63A		1561-4	3P+N+E	110V			16A
	6501-9		230V							1561-9		230V			
	6501		400V							1561		400V			
	1321-4	2P+E	110V	16A						3361-4	2P+E	110V		32A	
	1321		230V							3361		230V			
	1321-9		400V							3361-9		400V			
	1421-4	3P+E	110V			16A				3461-4	3P+E	110V	32A		
	1421-9		230V							3461-9		230V			
	1421		400V							3461		400V			
	1521-4	3P+N+E	110V					16A		3561-4	3P+N+E	110V			32A
	1521-9		230V							3561-9		230V			
	1521		400V							3561		400V			

PC Plug Socket Coupling

	Model	Poles	Voltage	Amp		Model	Poles	Voltage	Amp						
	6361-4	2P+E	110V	63A		1331-4	2P+E	110V	16A						
	6361		230V			1331		230V							
	6361-9		400V			1331-9		400V							
	6461-4	3P+E	110V			63A		1431-4		3P+E	110V	16A			
	6461-9		230V					1431-9			230V				
	6461		400V					1431			400V				
	6561-4	3P+N+E	110V					63A			1531-4		3P+N+E	110V	16A
	6561-9		230V								1531-9			230V	
	6561		400V								1531			400V	
	1351-4	2P+E	110V	16A					3331-4		2P+E		110V	32A	
	1351		230V						3331				230V		
	1351-9		400V						3331-9				400V		
	1451-4	3P+E	110V			16A			3431-4		3P+E	110V	32A		
	1451-9		230V						3431-9			230V			
	1451		400V						3431			400V			
	1551-4	3P+N+E	110V					16A		3531-4	3P+N+E	110V			32A
	1551-9		230V							3531-9		230V			
	1551		400V							3531		400V			
	3351-4	2P+E	110V	32A						6331-4	2P+E	110V		63A	
	3351		230V							6331		230V			
	3351-9		400V							6331-9		400V			
	3451-4	3P+E	110V			32A				6431-4	3P+E	110V	63A		
	3451-9		230V							6431-9		230V			
	3451		400V							6431		400V			
	3551-4	3P+N+E	110V					32A		6531-4	3P+N+E	110V			63A
	3551-9		230V							6531-9		230V			
	3551		400V							6531		400V			
	6351-4	2P+E	110V	63A						1341-4	2P+E	110V		16A	
	6351		230V							1341		230V			
	6351-9		400V							1341-9		400V			
	6451-4	3P+E	110V			63A				1441-4	3P+E	110V	16A		
	6451-9		230V							1441-9		230V			
	6451		400V							1441		400V			
	6551-4	3P+N+E	110V					63A		1541-4	3P+N+E	110V			16A
	6551-9		230V							1541-9		230V			
	6551		400V							1541		400V			

PC Plug Socket Coupling

	Model	Poles	Voltage	Amp		Model	Poles	Voltage	Amp						
	3341-4	2P+E	110V	32A		6311-4	2P+E	110V	63A						
	3341		230V			6311		230V							
	3341-9		400V			6311-9		400V							
	3441-4	3P+E	110V			32A		6411-4		3P+E	110V	63A			
	3441-9		230V					6411-9			230V				
	3441		400V					6411			400V				
	3541-4	3P+N+E	110V					32A			6511-4		3P+N+E	110V	63A
	3541-9		230V								6511-9			230V	
	3541		400V								6511			400V	
	6341-4	2P+E	110V	63A					1302-4		2P+E		110V	16A	
	6341		230V						1302				230V		
	6341-9		400V						1302-9				400V		
	6441-4	3P+E	110V			63A			1402-4		3P+E	110V	16A		
	6441-9		230V						1402-9			230V			
	6441		400V						1402			400V			
	6541-4	3P+N+E	110V					63A		1502-4	3P+N+E	110V			16A
	6541-9		230V							1502-9		230V			
	6541		400V							1502		400V			
	1311-4	2P+E	110V	16A						3302-4	2P+E	110V		32A	
	1311		230V							3302		230V			
	1311-9		400V							3302-9		400V			
	1411-4	3P+E	110V			16A				3402-4	3P+E	110V	32A		
	1411-9		230V							3402-9		230V			
	1411		400V							3402		400V			
	1511-4	3P+N+E	110V					16A		3502-4	3P+N+E	110V			32A
	1511-9		230V							3502-9		230V			
	1511		400V							3502		400V			
	3311-4	2P+E	110V	32A						6302-4	2P+E	110V		63A	
	3311		230V							6302		230V			
	3311-9		400V							6302-9		400V			
	3411-4	3P+E	110V			32A				6402-4	3P+E	110V	63A		
	3411-9		230V							6402-9		230V			
	3411		400V							6402		400V			
	3511-4	3P+N+E	110V					32A		6502-4	3P+N+E	110V			63A
	3511-9		230V							6502-9		230V			
	3511		400V							6502		400V			

PC Plug Socket Coupling

	Model	Poles	Voltage	Amp		Model	Poles	Voltage	Amp						
	5302-4		110V	125A		5322-4		110V	125A						
	5302		230V			5322		230V							
	5302-9		400V			5322-9		400V							
	5402-4		110V			125A		5422-4			110V	125A			
	5402-9		230V					5422-9			230V				
	5402		400V					5422			400V				
	5502-4		110V					125A			5522-4			110V	125A
	5502-9		230V								5522-9			230V	
	5502		400V								5522			400V	
	1322-4		110V	16A					1362-4				110V	16A	
	1322		230V						1362				230V		
	1322-9		400V						1362-9				400V		
	1422-4		110V			16A			1462-4			110V	16A		
	1422-9		230V						1462-9			230V			
	1422		400V						1462			400V			
	1522-4		110V					16A		1562-4		110V			16A
	1522-9		230V							1562-9		230V			
	1522		400V							1562		400V			
	3322-4		110V	32A						3362-4		110V		32A	
	3322		230V							3362		230V			
	3322-9		400V							3362-9		400V			
	3422-4		110V			32A				3462-4		110V	32A		
	3422-9		230V							3462-9		230V			
	3422		400V							3462		400V			
	3522-4		110V					32A		3562-4		110V			32A
	3522-9		230V							3562-9		230V			
	3522		400V							3562		400V			
	6322-4		110V	63A						6362-4		110V		63A	
	6322		230V							6362		230V			
	6322-9		400V							6362-9		400V			
	6422-4		110V			63A				6462-4		110V	63A		
	6422-9		230V							6462-9		230V			
	6422		400V							6462		400V			
	6522-4		110V					63A		6562-4		110V			63A
	6522-9		230V							6562-9		230V			
	6522		400V							6562		400V			

PC Plug Socket Coupling

	Model	Poles	Voltage	Amp		Model	Poles	Voltage	Amp						
	1352-4	2P+E	110V	16A		3332-4	2P+E	110V	32A						
	1352		230V			3332		230V							
	1352-9		400V			3332-9		400V							
	1452-4	3P+E	110V			16A		3432-4		3P+E	110V	32A			
	1452-9		230V					3432-9			230V				
	1452		400V					3432			400V				
	1552-4	3P+N+E	110V					16A			3532-4		3P+N+E	110V	32A
	1552-9		230V								3532-9			230V	
	1552		400V								3532			400V	
	3352-4	2P+E	110V	32A					6332-4		2P+E		110V	63A	
	3352		230V						6332				230V		
	3352-9		400V						6332-9				400V		
	3452-4	3P+E	110V			32A			6432-4		3P+E	110V	63A		
	3452-9		230V						6432-9			230V			
	3452		400V						6432			400V			
	3552-4	3P+N+E	110V					32A		6532-4	3P+N+E	110V			63A
	3552-9		230V							6532-9		230V			
	3552		400V							6532		400V			
	6352-4	2P+E	110V	63A						5332-4	2P+E	110V		125A	
	6352		230V							5332		230V			
	6352-9		400V							5332-9		400V			
	6452-4	3P+E	110V			63A				5432-4	3P+E	110V	125A		
	6452-9		230V							5432-9		230V			
	6452		400V							5432		400V			
	6552-4	3P+N+E	110V					63A		5532-4	3P+N+E	110V			125A
	6552-9		230V							5532-9		230V			
	6552		400V							5532		400V			
	1332-4	2P+E	110V	16A						1342-4	2P+E	110V		16A	
	1332		230V							1342		230V			
	1332-9		400V							1342-9		400V			
	1432-4	3P+E	110V			16A				1442-4	3P+E	110V	16A		
	1432-9		230V							1442-9		230V			
	1432		400V							1442		400V			
	1532-4	3P+N+E	110V					16A		1542-4	3P+N+E	110V			16A
	1532-9		230V							1542-9		230V			
	1532		400V							1542		400V			

PC Plug Socket Coupling

	Model	Poles	Voltage	Amp		Model	Poles	Voltage	Amp
	3342-4	 2P+E	110V	32A		3312-4	 2P+E	110V	32A
	3342		230V			3312		230V	
	3342-9		400V			3312-9		400V	
	3442-4	 3P+E	110V			3412-4	110V		
	3442-9		230V				3412-9	230V	
	3442		400V				3412	400V	
	3542-4	 3P+N+E	110V			3512-4	110V		
	3542-9		230V				3512-9	230V	
	3542		400V				3512	400V	
	6342-4	 2P+E	110V	63A		6312-4	 2P+E	110V	65A
	6342		230V			6312		230V	
	6342-9		400V			6312-9		400V	
	6442-4	 3P+E	110V			6412-4	110V		
	6442-9		230V				6412-9	230V	
	6442		400V				6412	400V	
	6542-4	 3P+N+E	110V			6512-4	110V		
	6542-9		230V				6512-9	230V	
	6542		400V				6512	400V	
	5342-4	 2P+E	110V	125A		1201	 2P	230V	16A
	5342		230V						
	5342-9		400V						
	5442-4	 3P+E	110V						
	5442-9		230V						
	5442		400V						
	5542-4	 3P+N+E	110V						
	5542-9		230V						
	5542		400V						
	1312-4	 2P+E	110V	16A		1232	 2P	230V	16A
	1312		230V						
	1312-9		400V						
	1412-4	 3P+E	110V						
	1412-9		230V						
	1412		400V						
	1512-4	 3P+N+E	110V						
	1512-9		230V						
	1512		400V						

Socket Outlets

110-250V Socket Outlets

IP56 Series 110-250V Socket Outlets feature a patented transparent hinged flap which snaps shut and locks over the socket when the plug is withdrawn, forming an automatic IP66 seal. The flap is transparent so the pin configuration can be readily identified without opening.



Type	56SO 310	56SO 310/2	56SO 315	56SO 313	56SO 316/110	56SO 316/240	56SO 320	56SO 332
Rated Operational Voltage Ue(-50Hz)	250	250	250	250	110 Yellow	230 Blue	250	250
Rated Thermal Current Enclosed	10	10	15	15	16	16	20	32
Number of Socket Pins(Including Earth)	3	3	3	3	3	3	3	3
Description	NZ/Aust	NZ/Aust Twin Socket Outlet	NZ/Aust	BS Square Pin	CEE17.6h	CEE17.6h	AS3123	AS1323
Socket configuration								
Cable cross sections solid or stranded mm ²	Min	0.75	0.75	0.75	0.75	0.75	1.0	1.0
	Max	10	10	10	10	6	10	10
IP Rating	IP66	IP66	IP66	IP66	IP66 Without Plug IP44 With Plug	IP66 Without Plug IP44 With Plug	IP66	IP66

500V Socket Outlets

Socket units are standard one gang module use with 56E1 enclosures combining with other accessories in a larger enclosure.

Type	56SO 416	56SO 416K	56SO 420	56SO 432	56SO 435	56SO 440	56SO 450	56SO 516	56SO 520	56SO 532	56SO 535	56SO 540	56SO 550	56SO 616	56SO 716	56SO 720
Rated Operational Voltage Ue(-50Hz)	500	500	500	500	500	500	500	500	500	500	500	500	500	500	500	500
Rated Thermal Current Enclosed	16	16	20	32	35	40	50	16	20	32	35	40	50	20	16	20
Number of Socket Pins (Including Earth)	4	4	4	4	4	4	4	5	5	5	5	5	5	5	7	7
Socket Configuration																
Cable Cross Sections Solid or Streamded mm ²	Min	1	1	1	1	1	1	1	1	1	1	1	1	1	1	1
	Max	10	10	10	16	16	16	25	10	10	16	16	16	25	10	10
IP Rating	IP66	IP66	IP66	IP66	IP66	IP66	IP66	IP66	IP66	IP66	IP66	IP66	IP66	IP66	IP66	IP66

Combination Switched Sockets

1. Application

The 56 Series includes an extensive range of one piece combination Switched Sockets.

Optional keylocking OFF facility(quote " CVK " when ordeting keylock type,e.g.cat no. 56CVK310).For NEON indicator option add " N " after catalogue number.



110-250V Combination Switched Sockets

Type		56CV310	56CV315	56CV313	56CV316/110	56CV316/240	56CV320	56CV332
Rated Operational Voltage Ue(-50Hz)	Volts	250	250	230	110	230	250	250
Rated Thermal Current Enclosed	Amps	10	15	13	16	16	20	32
Description		Switched NZ/Aust Socket	Switched NZ/Aust Socket	Switched British Square Pin Sicket	Switched CEE17-4h Socket (Yellow)	Switched CEE17-4h Socket (Blue)	Switched AS1323 Socket	Switched AS1323 Socket
<u>Switch</u> Description		1 way Single Pole	1 way Double Pole	1 way Double Pole	1 way Double Pole	1 way Double Pole	1 way Double Pole	1 way Double Pole
Utilisation Category								
AS3133 250V	Amps	10AxM50	16AxM120	16AxM120	16AxM120	16AxM120	20AxM150	32AxM180
AC23A 240V	Amps	15	15	15	15	15	21	28
	kW	2.2	2.2	2.2	2.2	2.2	3.0	4.0
Cable Cross Section	Min	0.75	1.0	1.0	1.0	1.0	1.0	1.0
Solid or Stranded mm ²	Max	6	1.6	1.6	1.6	1.6	1.6	1.6
<u>Socket</u>								
Number of Socket Pins Including(Earth)		3	3	3	3	3	3	3
Socket configuration								
Cable Cross section	Min	10	10	10	10	10	10	10
solid or stranded mm ²	Max	10	10	10	10	10	10	10
IP Rating		IP66	IP66	IP66	IP66 without plug IP44 with plug	IP66 without plug IP44 with plug	IP66	IP66

500V Combination Switched Sockets

All 500V Switched Sockets rated 32A and above have an internal interlocking feature(plugs cannot be withdrawn or inserted when the switch is in the ON position). This feature is also available for 16A and 20A upon request.

Optional keylocking OFF facility(quote " cvk " when ordering keylock type,e.g.cat no.56CVK432).

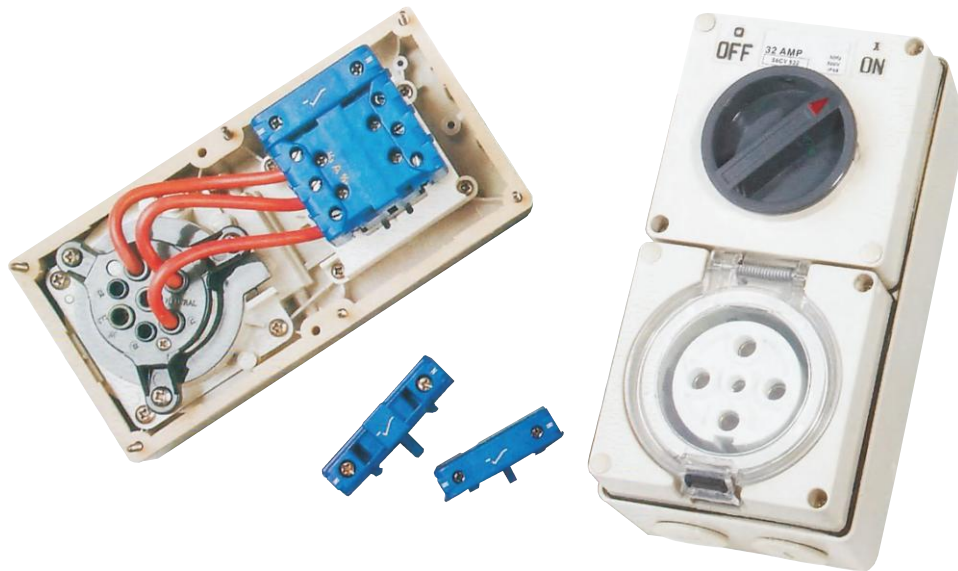
For NEON indicator option add " N " after catalogue number.



Type		56CV 416	56CV 416K	56CV 420	56CV 432	56CV 435	56CV 440	56CV 450	56CV 516	56CV 520	56CV 532	56CV 535	56CV 540	56CV 550	56CV 616	56CV 716	56CV 720
Rated Operational Voltage Ue(-50Hz)	Volts	500	500	500	500	500	500	500	500	500	500	500	500	500	500	500	500
Rated Thermal Current Enclosed	Amps	16	16	20	32	35	40	50	16	20	32	35	40	50	16	16	20
Switch Description		3Pole	3Pole	3Pole	3Pole	3Pole	3Pole	3Pole	3Pole	3Pole	3Pole	3Pole	3Pole	3Pole	3Pole	3Pole	3Pole
Utilisation Category	Amps	16AX M120	20AX M180	32AX M180	32AX M250	32AX M250	50AX M250	50AX M120	16AX M150	20AX M160	32AX M180	32AX M250	50AX M250	50AX M120	16AX M120	16AX M120	20AX M150
AS3133 250V	kW	7.5	11.0	15.0	15.0	15.0	18.5	18.5	7.5	11.0	15.0	15.0	18.5	18.5	7.5	7.5	11.0
AC23A 240V	Amps	15	21	28	28	28	35	35	15	21	28	28	35	35	15	15	21
Cable Cross Section	Min	1	1	1	1	1	1	6	6	1	1	1	6	6	1	1	1
Solid or Stranded mm ²	Max	16	16	16	16	16	16	35	35	16	16	16	35	35	16	16	16
Socket																	
Number of Socket Pins Including(Earth)		4	4	4	4	4	4	4	5	5	5	5	5	5	6	7	7
Socket Configuration																	
IP Rating		IP66	IP66	IP66	IP66	IP66	IP66	IP66	IP66	IP66	IP66	IP66	IP66	IP66	IP66	IP66	IP66

500V KG Combination Switched Sockets For Use With Extra Poles

IP56 has utilised the proven ANDELI KG series of switches in this range of 56 Series Combination Switched Sockets. Combination switched sockets from this range are suitable for use with the fully motor rated KG Series Extra Poles available from IP56.



Type		56CV 416KG	56CV 420KG	56CV 432KG	56CV 435KG	56CV 440KG	56CV 450KG	56CV 516KG	56CV 520KG	56CV 532KG	56CV 535KG	56CV 540KG	56CV 550KG	56CV 616KG	56CV 716KG	56CV 720KG
Rated Operational Voltage Ue(-50Hz)	Volts	500	500	500	500	500	500	500	500	500	500	500	500	500	500	500
Rated Thermal Current Enclosed	Amps	16	20	32	35	40	50	16	20	32	35	40	50	16	16	20
Switch		3Pole	3Pole	3Pole	3Pole	3Pole	3Pole	3Pole	3Pole	3Pole	3Pole	3Pole	3Pole	3Pole	3Pole	3Pole
Utilisation Category		20	20	32	40	40	63	20	20	32	40	40	63	20	20	20
AC21A 500V	Amps	7.5	7.5	11	15	15	22	7.5	7.5	11	15	15	22	7.5	7.5	7.5
AC23A 415V	kW	5.5	5.5	7.5	11	11	15	5.5	5.5	7.5	11	11	15	5.5	5.5	5.5
ACS415V	kW															
Cable Cross Section	Min	1	1	1	6	6	6	1	1	1	6	6	6	1	1	1
	Max	6	6	6	16	16	16	6	6	6	16	16	16	6	6	6
Socket																
Number of Socket (Including Earth)		4	4	4	4	4	4	5	5	5	5	5	5	6	4	4
Socket Configuration																
IP Rating		IP66	IP66	IP66	IP66	IP66	IP66	IP66	IP66	IP66	IP66	IP66	IP66	IP66	IP66	IP66

Mounting Enclosures(Back Boxes)

All ANDELI Mounting Back Boxes are moulded in UV stabilised rigid RVC to facilitate glueing of fittings for conduct entry.

Ample conduit and cable entries are provided and there is plenty of wiring room for easy installation.

All screwed conduit entries are provided with plugs. The multigang enclosures feature moulded bridges between modules to ensure switches and sockets sit flush on a continuous surface. Moulded dividers are also available for multigang boxes to Segregate services and are standard with 4,6,8,9, and 16 gang enclosures.

Each enclosure has a number of mounting points and 220/10 Sealing Plugs are provided to double insulate mounting screw heads and ensure the IP rating.

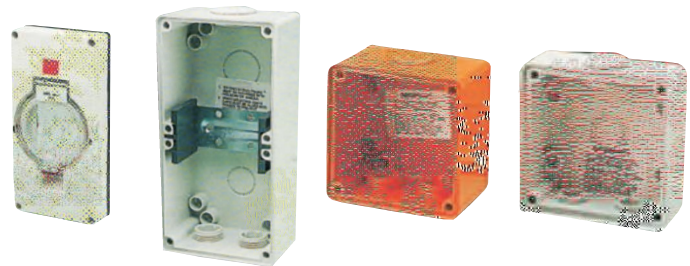
Moulded gaskets are supplied with switch and socket modules.

Options Available

- Resistant Orang-add RO to Catalog Number e.g.56E2 becomes 56E2RO.

Options Available

Stainless steel pole mounting bracket kit to suit 56E2,56E3 and 56E4VH Modules. Catalogue No 56PMK.
Stainless steel mounting feet suit all enclosures. Catalogue Number56MF.

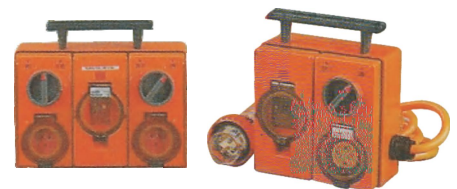


Type	No.of Gangs	O/A*Dims. (H)x(W)x(D)	Mounting Points	No.of Conduct Entries(mm)	Cut Out Provision (mm)
56E1	1	101 x 101 x 63	8	2 x 25.1 x 32	1 x 25/32
56ES1	1	101 x 101 x 38	4	1 x 25.1 x 20	1 x 20/25
56E2	2	198 x 101 x 63	8	2 x 25.1 x 32	1 x 25.1/32
56ED2	2	198 x 101 x 100	8	2 x 40	1 x 25.1/32
56ES2	2	198 x 101 x 38	4	1 x 25.2 x 32	2 x 20/25
56E2/4EL	2	198 x 101 x 105	8	2 x 25.1 x 32	1 x 25.1x32
56E3	3	294 x 101 x 63	16	2 x 25.1 x 32	2 x 25.1 x 32
56E4	4	198 x 198 x 63	16	2 x 25.2 x 32	2 x 25.1 x 322.1 x 40
56E4VH	4	391 x 101 x 63	16	2 x 25.1 x 32	2 x 25.1 x 32.1 x 40
56E6	6	294 x 198 x 63	24	2 x 25.2 x 32	2 x 25.2 x 32.2 x 40
56E8	8	391 x 198 x 63	28	2 x 25.2 x 32	4 x 25.2 x 32.2 x 40
56E9	9	294 x 294 x 63	28	2 x 25.2 x 32	4 x 25.1 x 32.1 x 40
56E16	16	391 x 391 x 63	48	2 x 25.2 x 32	6 x 25.6 x 32.4 x 40

56E2/4EL denotes an E2 enclosure complete with 56EL4N Cover and DIN rail to suit 4EL RCDs.

Portable Combination Switched Sockets with RCD

Ruggedly constructed, these portable units feature an easy to carry handle, a hanging facility for builder's poles and 3 metres of heavy duty flexible cord.



Type	No.of Phases	I _{th} (A)	U _e (V)	No.of Sockets	Tripping Sensitivity	Type Matching Plug	Type Angled Plug	Overall Dimensions (H)x(W)x(D)	Socket Config
56C310EL2P	1	10	250	2(3 flat pins)	30mA	56P310	-	243 x 294 x 105	A
56C315ELP	1	15	250	1(3 flat pins)	30mA	56P315	-	243 x 195 x 105	G
56C420ELP	3	20	415	1(4 round pins)	30mA	56P420	56PA420	243 x 195 x 105	L
56SO4ELP15	1	10	250	4(auto,3 flat pins)	30mA	56P310	-	243 x 294 x 105	A

Refer to pgae 24 & 25 for explanation of pin configurations.

Note:Combinations with various pin configurations, current ratings and 100mA

Special order are available upon request

Plugs

Extension Sockets & Appliance Connectors

ANDELI's Three Phase Extension Socket/Appliance Connector is an important design breakthrough. Now there is a common unit for both cord extension socket and appliance connector applications. All connectors have impact resistant, UV stabilised mouldings.

The IP66 rating can be achieved when extension socket/connectors are used in conjunction with compatible accessories such as 56P Plugs, 56PA Plugs and 56A1 Appliance Inlets.

IP66 rated units feature a hose proof cap which maintains the international Protection rating when the accessory is not being used.



Note: Cap not provided as standard with single phase extension sockets.

Refer 56T Series for terminators to connect hose to non standard gland nut thread.

Options available

- 56SC2 Socket Cap to suit single phase extension sockets.
- 56CSC310 and 56CSC315 available in Resistant Orange-add RO to Catalogue Number e.g. 56CSC310 becomes 56CSC310RO.

Type	I_{th} (A)	U_i (V)	No. of Sockets	Conductor Term. size in mm ²		Cable Nominal Diameter in mm ²		IP Rating	Matching Plug Straight	Matching Plug Angle	Gland Nut Thread
				Min.	Max.	Min.	Max.				
56CSC310	10	250	3 Flat	1.0	6	6	12.5	66	56P310	56PA310	20mm
56CSC315	15	250	3 Flat	1.0	6	6	12.5	66	56P315	56PA315	20mm
56CSC410	10	500	4 Round	1.0	6	6	15.7	66	56P410	56PA410	23mm
56CSS420	20	500	4 Round	1.0	6	6	15.7	66	56P420	56PA420	23mm
56CSC432	32	500	4 Round	2.5	16	9	28	66	56P432	56PA432	37mm
56CSC440	40	500	4 Round	2.5	16	9	28	66	56P440	56PA440	37mm
56CSC450	50	500	4 Round	2.5	16	9	28	66	56P450	56PA450	37mm
56CSC510	10	500	5 Round	1.0	6	6	15.7	66	56P510	56PA510	23mm
56CSC520	20	500	5 Round	1.0	6	6	15.7	66	56P520	56PA520	23mm
56CSC532	32	500	5 Round	2.5	16	9	28	66	56P532	56PA532	37mm
56CSC540	40	500	5 Round	2.5	16	9	28	66	56P540	56PA540	37mm
56CSC550	50	500	5 Round	2.5	16	9	28	66	56P550	56PA550	37mm

U_i Insulation Voltage
 I_{th} Conventional Free Air Current

Refer to gauge 43 for explanation of socket configurations

Refer to rear of catalogue for further details

Pendant Outlets

ANDELI 56PO Three Phase pendant Outlets are a hanging version of our 56CSC connectors.

All have impact resistant UV stabilised mouldings.



Type	I_{th} (A)	U_i (V)	No. of Sockets	Conductor Term. size in mm ²		Cable Nominal Diameter in mm ²		IP Rating	Matching Plug Straight	Matching Plug Angle	Gland Nut Thread
				Min.	Max.	Min.	Max.				
56PO410	10	500	4 Round	1.0	6	6	15.7	66	56P410	56PA410	23mm
56PO420	20	500	4 Round	1.0	6	6	15.7	66	56P420	56PA420	23mm
56PO432	32	500	4 Round	2.5	16	9	28	66	56P432	56PA432	37mm
56PO440	40	500	4 Round	2.5	16	9	28	66	56P440	56PA440	37mm
56PO450	50	500	4 Round	2.5	16	9	28	66	56P450	56PA450	37mm
56PO510	10	500	5 Round	1.0	6	6	15.7	66	56P510	56PA510	37mm
56PO520	20	500	5 Round	1.0	6	6	15.7	66	56P520	56PA520	37mm
56PO532	32	500	5 Round	2.5	16	9	28	66	56P532	56PA532	37mm
56PO540	40	500	5 Round	2.5	16	9	28	66	56P540	56PA540	37mm
56PO550	50	500	5 Round	2.5	16	9	28	66	56P550	56PA550	37mm

U_i Insulation Voltage

I_{th} Conventional Free Air Thermal Current



250V Plugs

The 56 Series single phase plugs are available in 10A, 15A, 20A and 32A Pin configurations to suit the Australian and New Zealand markets and in the British 13A square pin configuration. All plugs are IP66 rated.

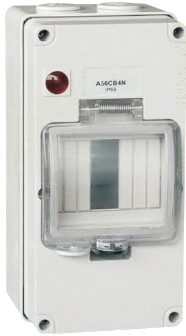
Type(Angled) Type(Straight)		56P310	56P315	56P313	56P320 56PA320	56P332 56PA332
Rated Operation Voltage Ue(-50Hz)	Volts	250	250	250	250	250
Max.Thermal Current Enclosed	Amps	10	15	13	20	32
Number of Pins (Including Earth)		3	3	3	3	3
Pin Configuration						
Cable Entry Diameter	Min	6	8	6	7	10
	Max	9	11	10	16	27
Capacity mm ²	Min	0.75	1.0	0.75	1	2.5
	Min	1.5	1.5	1.5	6	16

500V Plugs

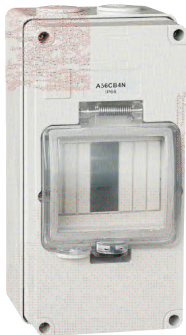
These plugs are all rated IP66 when fitted to a 56 Series cord connector or Socket Outlet. The body section is transparent for quick and easy inspection of the terminals and cable entry. Plugs are available with 4 to 7 pins. 16A to 50A to cover most applications.

Type(Angled) Type(Straight)		56P 416	56P 416	56P 420	56P 432	56P 432RF*	56P 435	56P 440	56P 450	56P 516	56P 520	56P 532	56P 535	56P 540	56P 550	56P 616	56P 716	56P 720
		56PA 416	56PA 416K	56PA 420	56PA 432	56PA 432RF*	56PA 435	56PA 440	56PA 450	56PA 516	56PA 520	56PA 532	56PA 535	56PA 540	56PA 550	56PA 616	56PA 716	56PA 716
Rated Operation Voltage Ue(-50Hz)	Volts	500	500	500	500	500	500	500	500	500	500	500	500	500	500	500	500	500
Rated Thermal Current Enclosed	Amps	16	16	20	32	32	35	40	50	16	20	32	35	40	50	16	16	20
Number of Pins (Including Earth)		4	4	4	4	4	4	4	4	5	5	5	5	5	5	6	7	7
Pin Configuration																		
Cable Entry Diameter	Min	7	7	7	10	10	10	10	10	7	7	10	10	10	10	7	7	7
	Max	16	16	16	27	27	27	27	27	16	16	27	27	27	27	16	16	16
Capacity mm ²	Min	1	1	1	2.5	2.5	2.5	2.5	4	1	1	2.5	2.5	2.5	4	4	4	4
	Min	6	6	6	16	16	16	16	16	6	6	16	16	16	6	6	6	6
Auxiliary Pins C1-C2 Maximum Current																10A	10A	10A

Switchgear Cover Assemblies



With indicator



Without indicator

The 56 Series Two Gang Cover Assemblies are moulded in hi-impact polycarbonate and feature a specially designed mounting bracket which will accommodate the full range of Clipsal circuit breakers, RCDs and combination MCB/RCDs.

Covers suit all 56 Series Enclosures (minimum standard depth 63mm) are supplied with neon indicators which can be wired from either the line or load side of the switch.

The unique protective membrane versions offer the same level of safety even when the flap is opened. A special membrane, incorporated into the units covers MCBs, RCDs and accessories to provide a barrier against dust and water, including wet hands when the flap is opened to reset switches.

Option Available

Resistant Orange - add RO to Catalogue Number e.g. 56CB4N becomes 56CB4NRO.

Resistant White - add RW to Catalogue Number e.g. 56CB4N becomes 56CB4NRW.

Chemical Grey - add CG to Catalogue Number e.g. 56CB4N becomes 56CB4NCG.

Protective membrane - add M to catalogue number e.g. 56CB4N becomes 56CB4NM.

Type	Rated	Module Type	No.of Poles	Module Width	Protective Membrane
56CB4N	240/415	MCB+RCD's	4	4	no
56CB4	-	MCB+RCD's	4	4	no
56CB4NM	240/415	MCB+RCD's	4	4	Yes

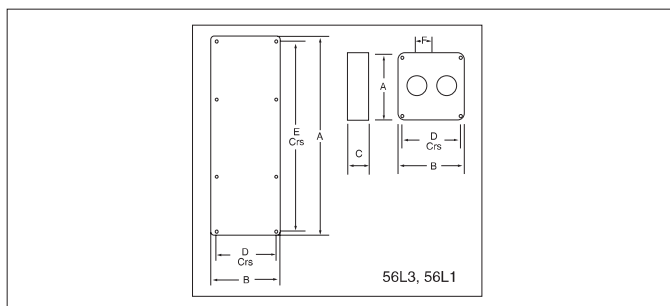
Enclosure Lids(Covers)

Mounting enclosure lids are moulded in UV stabilised polycarbonate.

All are 28mm high and supplied complete with sealing gasket.

Option available

- Resistant Orange-add RO to Cat. No.e.g.56L1 becomes 56L1RO.
- 56L1 available in Chemical Resistant Grey-add CG to Cat. NO.e.g.56L1 becomes 56L1CG.



Type	Dimensions(mm)				
	A	B	C	D	E
56L1	95	95	28	84	84
56L2	192	95	28	84	181
56L3	288	95	28	84	277
56L4	192	192	28	181	181

Weather Protected Isolating Switches

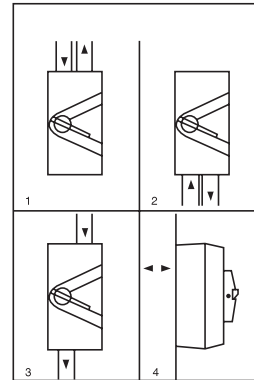
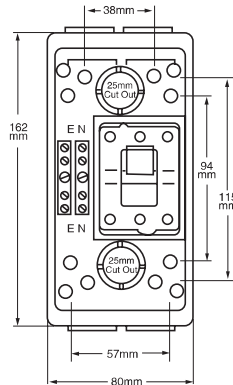
1. Application

The UKF Series of Weatherprotected Isolating Switches is a robust range of switches suitable for virtually any external application. All units comply to IEC60947-3.

Mines, and, Energy, south, Australia, Approvals.

Standard color are Grey & White.

1. Cables looped in and out from overhead.
2. In and out from underground.
3. In and out straight through the switch.
4. Two 25mm rear knockouts are moulded in the base for surface mounting with concealed wiring.



Dual 25mm screwed conduct entries top and bottom(up to 55 amp.)allows four ways to surface wire the switch.

Type		IP Rating
UKF1-20	20A 250V Single pole surface switch. Terminals accommodate 16mm ² cable.M Rating 220.	56
UKF1-35 UKF1-63	35A/63A 250V Single pole. Terminals accommodate 16mm ² cables.M Rating 220.	56

Type		IP Rating
UKF2-20	20A 440V double. Terminals accommodate 16mm ² cables. M Rating 180.	56
UKF2-35	35A 440V double. Terminals accommodate 16mm ² cables. M Rating 180.	56
UKF2-63	63A 440V double. Terminals accommodate 16mm ² cables. M Rating 180.	56

Type		IP Rating
UKF3-20	20A 440V Triple Pole. Terminals accommodate 16mm ² cables. M Rating 180.	56
UKF3-35	35A 440V Triple Pole. Terminals accommodate 16mm ² cables. M Rating 180.	56
UKF3-63	53A 440V Triple Pole. Terminals accommodate 16mm ² cables. M Rating 160.	56
UKF4-20	20A 440V Triple Pole. Terminals accommodate 16mm ² cables. M Rating 180.	56
UKF4-35	35A 440V Triple Pole. Terminals accommodate 16mm ² cables. M Rating 180.	56
UKF4-63	53A 440V Triple Pole. Terminals accommodate 16mm ² cables. M Rating 160.	56
UKF3-55-32CE	55A 440V Triple Pole. With 32mm conduit entry at each end. Terminals accommodate 25mm ² cables. M Rating 160.	56
UKF3-63-32CE	63A 440V Triple Pole. With 32mm conduit entry at each end. Terminals accommodate 25mm ² cables. M Rating 160.	56
UKF3-80-CE	80A 440V Triple Pole. With 32mm conduit entry at each end. Terminals accommodate 25mm ² cables. M Rating 150.	56



Switch & Push Button Box(Indoor Use)

Protection Degree: IP66



Description	Dimension		
	PART NO.	W x H x D(m/m)	
Material ABS	DS-AG-0506	50 x 65 x 55	
	DS-AG-0609	65 x 95 x 55	
	DS-AG-0811-S	80 x 110 x 45	
	DS-AG-0811	80 x 110 x 70	
	DS-AG-0813	80 x 130 x 70	
	DS-AG-0816	80 x 160 x 55	
	DS-AG-0818	80 x 180 x 70	
	DS-AG-0825	80 x 250 x 70	
	DS-AG-0811-1	80 x 110 x 85	
	DS-AG-0813-1	80 x 130 x 85	
Color: Grey	DS-AG-0818-1	80 x 180 x 85	
	DS-AG-0825-1	80 x 250 x 85	
	DS-AG-1212-S	125 x 125 x 75	
	DS-AG-1212	125 x 125 x 100	
	DS-AG-1217	125 x 175 x 75	
	DS-AG-1217-1	125 x 175 x 100	
	Door Solid	DS-AG-1417	140 x 170 x 95
		DS-AG-1520	150 x 200 x 100
		DS-AG-1520-1	150 x 200 x 130
		DS-AG-1525	150 x 250 x 100
DS-AG-1525-1		150 x 250 x 130	
DS-AG-2020		200 x 200 x 130	
DS-AG-2020-S		200 x 200 x 95	
DS-AG-1717-1		175 x 175 x 100	
DS-AG-1725		175 x 250 x 75	
DS-AG-0712		75 x 125 x 75	
DS-AG-0712-1	75 x 125 x 100		
DS-AG-1423	140 x 230 x 90		
DS-AG-1717	175 x 175 x 75		

Description	Dimension		
	PART NO.	W x H x D(m/m)	
Material ABS	DS-AT-0506	50 x 65 x 55	
	DS-AT-0609	65 x 95 x 55	
	DS-AT-0811-S	80 x 110 x 45	
	DS-AT-0811	80 x 110 x 70	
	DS-AT-0813	80 x 130 x 70	
	DS-AT-0816	80 x 160 x 55	
	DS-AT-0818	80 x 180 x 70	
	DS-AT-0825	80 x 250 x 70	
	DS-AT-0811-1	80 x 110 x 85	
	DS-AT-0813-1	80 x 130 x 85	
Color: Grey	DS-AT-0818-1	80 x 180 x 85	
	DS-AT-0825-1	80 x 250 x 85	
	DS-AT-1212-S	125 x 125 x 75	
	DS-AT-1212	125 x 125 x 100	
	DS-AT-1217	125 x 175 x 75	
	DS-AT-1217-1	125 x 175 x 100	
	Door Solid	DS-AT-1417	140 x 170 x 95
		DS-AT-1520	150 x 200 x 100
		DS-AT-1520-1	150 x 200 x 130
		DS-AT-1525	150 x 250 x 100
DS-AT-1525-1		150 x 250 x 130	
DS-AT-2020		200 x 200 x 130	
DS-AT-2020-S		200 x 200 x 95	
DS-AT-1717-1		175 x 175 x 100	
DS-AT-1725		175 x 250 x 75	
DS-AT-0712		75 x 125 x 75	
DS-AT-0712-1	75 x 125 x 100		
DS-AT-1423	140 x 230 x 90		
DS-AT-1717	175 x 175 x 75		

Distribution Box IP65



HT-5WAYS
(120 x 160 x 92)



HT-8WAYS
(200 x 150 x 92)



HT-12WAYS
(255 x 200 x 108)



HT-15WAYS
(310 x 200 x 108)



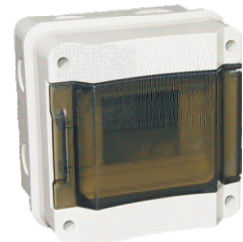
HT-18WAYS
(370 x 198 x 108)



HT-24WAYS
(275 x 355 x 108)



HK-5WAYS
(140 x 140 x 105)



HK-8WAYS
(185 x 185 x 105)



HK-12WAYS
(270 x 195 x 105)



HK-18WAYS
(370 x 195 x 105)



HA2-4WAYS
(140 x 210 x 100)



HA-8WAYS
(215 x 210 x 100)



HA-12WAYS
(300 x 260 x 140)



HA-18WAYS
(410 x 285 x 140)



HA-24WAYS
(300 x 415 x 140)



HA-54WAYS
(410 x 655 x 141)

Distribution Box



TSM-6N



TSM-8N



TSM-12N



TSM-18N



TSM-6



TSM-8



TSM-12



TSM-18



10WAY



18WAY

MG Window: white or transparent
Available Way: 2, 4, 6, 8, 10, 12, 15, 18, 24, 36, 45



1P



2P



4P

AD Available Way: 1, 2, 4, 6, 8, 12, 18, 24



ZY-4



ZY-8

Available Way: 4, 6, 8, 10, 12, 16, 18, 24



ABC-500



ABC-900

Available Way: 8, 12, 14, 18, 24

Distribution Box



1504



1506



1509



1512



1518



1524



1536



0402B



0403B



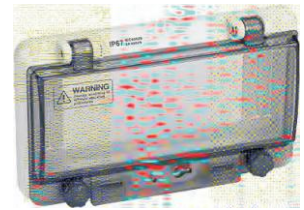
0404B



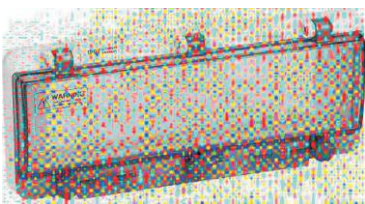
0405B



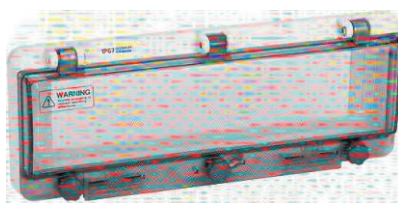
0406B



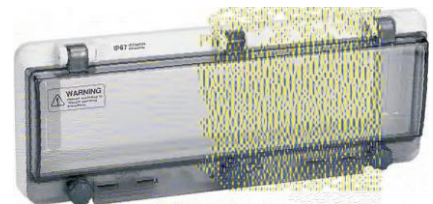
0408B



0412B



0413B



0416A

Distribution Box



223415



274616



304016



305216



365418



1805



1805B



1802



1803



0406B



1807-A



1807-B



1807-C



1807-D



1806-A



1806-B



1806-C



1806-D

Water Proof Enclosure



50 x 50



80 x 50



80 x 80 x 50



85 x 85 x 50



100 x 100 x 70



150 x 110 x 70



150 x 150 x 70



200 x 100 x 70



200 x 155 x 80



200 x 200 x 80



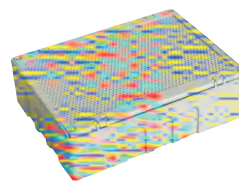
255 x 200 x 80



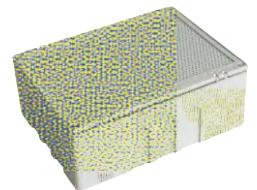
300 x 250 x 120



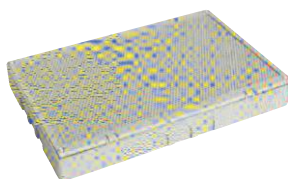
400 x 350 x 120



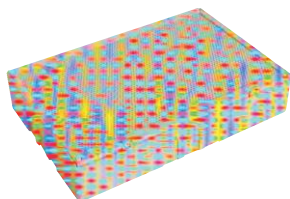
200 x 150 x 60



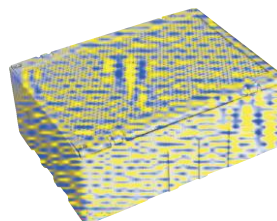
200 x 150 x 80



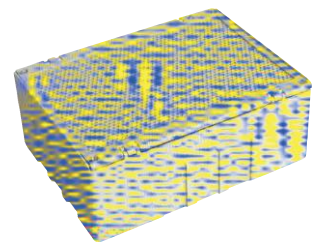
300 x 200 x 40



300 x 200 x 60

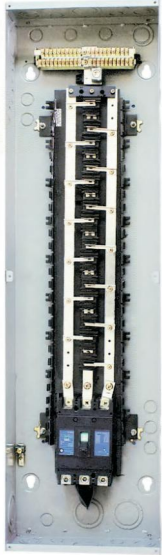


300 x 200 x 80



400 x 300 x 80

Distribution Board PZ30DB

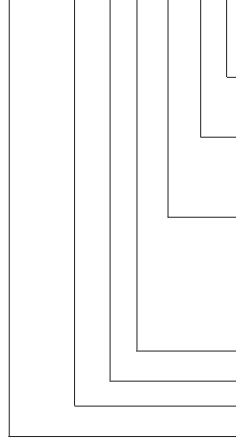


PZ30DB1



PZ30DB2

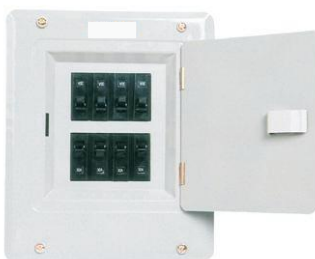
PZ30DB M 24 3 10 H F



- Enclosure Type
- F:Flush S: Surface
- Main Breaker
- BH H:HBH
- SS:NF100-SS C:NF250-CS
- Main Breaker Ratings
- 10:100A 12:125A 15:150A 17:175A
- 20:200A 22:225A 25:250A
- 3:3-Phase
- 1:1-Phase
- Blank:W/O main breaker
- Max.no.of breaker spaces
- With main breaker
- Series



PZ30DB-04-112F



PZ30DB-08-112F



PZ30DB-12-310F



PZ30DB-18-310F



PZ30DB-24-310F



PZ30DB-M18-310SSF



PZ30DB-M24-310SSF



PZ30DB-M30-310SSF



PZ30DB-M36-310SSF



PZ30DB-M42-310SSF

Distribution Board PZ30FE1

1.Application

This is an assembly of electro-conductive parts consisting of miniature circuit breakers(MCB) of various ratings,isolator switch,bus-bars,neutral & earth bars, all enclosed in a steel metal case for circuits of single-phase or three-phase.

They contain equipment for protecting,switching and controlling cables and apparatus.

Distribution boards are used in household,commercial and industrial installations for distributing of power to final sub-circuits e.g.lighting for cable entries,They could be surface-mounted or flush-mounted with removable cover and breakable inlet on both top and bottom sides for cable entries.

Every final sub-circuit is connected to one way of the distribution board via the MCB.The sizes of the circuit MCB depends on the rating of the final sub-circuits.

2.Specification

Model	Size	Surface install
		H x W x D / mm
Single phase	PZ30FE1-4#	315 x 260 x 112
	PZ30FE1-6#	365 x 260 x 112
	PZ30FE1-8#	415 x 260 x 112
	PZ30FE1-12#	515 x 260 x 112
Three phase	PZ30FE1-4#	510 x 390 x 100
	PZ30FE1-6#	590 x 390 x 100
	PZ30FE1-8#	660 x 390 x 100
	PZ30FE1-12#	820 x 390 x 100



PZ30FE-8#

PZ30FE-8#
Single PhasePZ30FE-4#
Three PhasePZ30FE2-6#
Three PhasePZ30FE2-27#
Three Phase

Distribution Board PZ30FE2

1.Application

The series in safe type which has short-rib over-loading,short circuit protective function.It is applicable to multicircuits of 225V rated current in different buildings for lighting and switchboard of 225V rated current in different buildings for lighting and switchboard,The crust is powder-coating and looks handsome.

2.Specification

Model	Size	Surface install
		H x W x D / mm
Three phase	PZ30FE2-4#	510 x 350 x 100
	PZ30FE2-6#	560 x 350 x 100
	PZ30FE2-8#	610 x 350 x 100
	PZ30FE2-10#	660 x 350 x 100
	PZ30FE2-12#	710 x 350 x 100

Distribution Board PZ30ME1



PZ30ME1-4#
Single Phase



PZ30ME1-8#
Single Phase



PZ30ME1-4#
Three Phase

Model	Size	H x W x D / mm
Single phase	PZ30ME1-4#	208 x 228 x 90
	PZ30ME1-6#	208 x 279 x 90
	PZ30ME1-8#	208 x 330 x 90
	PZ30ME1-10#	208 x 381 x 90
	PZ30ME1-12#	208 x 432 x 90
Three phase	PZ30ME1-3#	390 x 370 x 100
	PZ30ME1-4#	470 x 370 x 100
	PZ30ME1-6#	545 x 370 x 100
	PZ30ME1-8#	620 x 370 x 100
	PZ30ME1-10#	695 x 370 x 100
PZ30ME1-12#	770 x 370 x 100	

Distribution Board PZ30ME6

Model	Size	H x W x D / mm
Single phase	PZ30ME6-4#	228 x 248 x 90
	PZ30ME6-6#	228 x 299 x 90
	PZ30ME6-8#	228 x 350 x 90
	PZ30ME6-10#	228 x 401 x 90
	PZ30ME6-12#	228 x 452 x 90
Three phase	PZ30ME6-4#	493 x 398 x 100
	PZ30ME6-6#	568 x 398 x 100
	PZ30ME6-8#	643 x 398 x 100
	PZ30ME6-10#	718 x 398 x 100
	PZ30ME6-12#	793 x 398 x 100

Busbar Chamber AMBC-M

AMBC-M busbar chamber system is designed to provide either compact, wall-mounting installations or by using optional pedestal sets easily assembled switchboards. Every facility is provided to enable it to be mounted easily and economically to busbar chambers which can be applied either to a suitable load-bearing vertical surface; or by means of a pedestal set, affixed to a vertical surface which need not be load-bearing. These are produced in 100, 200, 400, 630 and 800 Amp.



144BBC



244BBC

Current (A)	List No. according to nominal length (mm)			
	550	900	1350	1800
100	142 BBC	143 BBC	144 BBC	146 BBC
200	242 BBC	243 BBC	244 BBC	246 BBC
400	442 BBC	443 BBC	444 BBC	446 BBC
630	–	643 BBC	644 BBC	646 BBC
800	–	843 BBC	844 BBC	846 BBC

Nominal length (mm)	A	B	C	D	E	F	G
	mm	mm	mm	mm	mm	mm	mm
1800	1812	364	222	280	1724	862	6
1350	1362	364	222	280	1274	–	4
900	912	364	222	280	824	–	4
550	562	364	222	280	474	–	4

JXF Waterproof Panel Board



Outdoor distribution box is a kind of box according to component model, specification, quantity design assemble type outdoor rain-proof distribution box with kinds of control functions.

Cabinet size can be arbitrarily selected.

Welding process is totally enclosed argon arc welding method.

Door plank uses Ann polyester waterproof sealing, with body structure close to the quite perfect combination.

Protection grade reaches : IP43 IP55, Ip65.

Exterior color spraying green thermosetting powder coatings, Advanced spraying process through high-temperature processing, which can make all kinds of complex products in the environment will not rust off.

Standard color is: outdoor type RAL7032, Outdoor RAL7035.

All boxes can also be customized.

Material using cold-rolled steel or stainless steel.

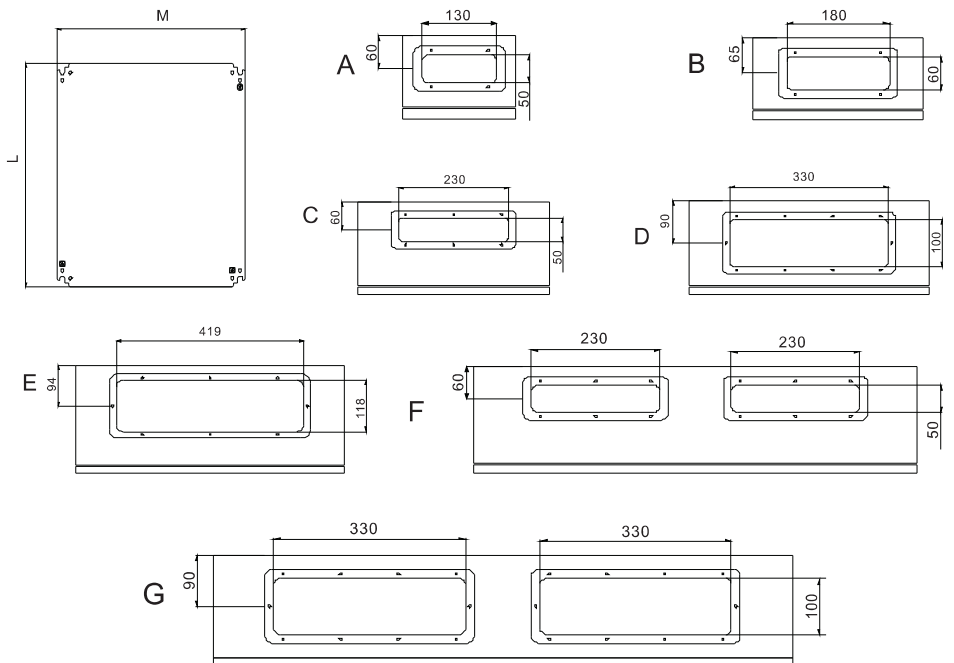


Size HXWXD/mm	Thickness			Bottom hole size	Lock QTY	Mounting plate size
	Door	Body	M.P			LXM/mm
200X200X150	1.2	1.2	2	A	1	150X150
250X200X150	1.2	1.2	2	A	1	200X150
300X200X150	1.2	1.2	2	A	1	250X150
300X200X200	1.2	1.2	2	A	1	250X150
300X250X150	1.2	1.2	2	A	1	250X200
300X250X200	1.2	1.2	2	A	1	250X200
300X250X250	1.2	1.2	2	B	1	250X200
300X300X150	1.2	1.2	2	B	1	250X250
300X300X200	1.2	1.2	2	B	1	250X250
300X300X250	1.2	1.2	2	B	1	250X250
400X300X150	1.2	1.2	2	B	1	350X250
400X300X200	1.2	1.2	2	B	1	350X250
400X300X250	1.2	1.2	2	B	1	350X250
400X300X300	1.2	1.2	2	B	1	350X250
400X400X150	1.2	1.2	2	C	1	350X350
400X400X200	1.2	1.2	2	C	1	350X350
400X400X250	1.2	1.2	2	C	1	350X350
400X400X300	1.2	1.2	2	C	1	350X350
500X300X150	1.2	1.2	2	B	1	450X250
500X300X200	1.2	1.2	2	B	1	450X250
500X300X250	1.2	1.2	2	B	1	450X250
500X300X300	1.2	1.2	2	B	1	450X250
500X400X150	1.2	1.2	2	C	1	450X350
500X400X200	1.2	1.2	2	C	1	450X350
500X400X250	1.2	1.2	2	C	1	450X350
500X400X300	1.2	1.2	2	C	1	450X350
500X500X150	1.2	1.2	2	D	1	450X450
500X500X200	1.2	1.2	2	D	1	450X450
500X500X250	1.2	1.2	2	D	1	450X450
600X400X150	1.2	1.2	2	C	2	550X350
600X400X200	1.2	1.2	2	C	2	550X350
600X400X250	1.2	1.2	2	C	2	550X350
600X400X300	1.2	1.2	2	C	2	550X350
600X500X150	1.2	1.2	2	D	2	550X450
600X500X200	1.2	1.2	2	D	2	550X450
600X500X250	1.2	1.2	2	D	2	550X450
600X500X300	1.2	1.2	2	D	2	550X450
600X600X150	1.2	1.2	2	D	2	550X550
600X600X200	1.2	1.2	2	D	2	550X550
600X600X250	1.2	1.2	2	D	2	550X550
600X600X300	1.2	1.2	2	D	2	550X550
600X600X400	1.2	1.2	2	D	2	550X550
700X400X200	1.2	1.2	2	B	2	650X350
700X400X300	1.2	1.2	2	B	2	650X350
700X500X150	1.2	1.2	2	D	2	650X450
700X500X200	1.2	1.2	2	D	2	650X450
700X500X250	1.2	1.2	2	D	2	650X450
700X500X300	1.2	1.2	2	D	2	650X450
700X600X200	1.2	1.2	2	D	2	650X550
700X600X250	1.2	1.2	2	D	2	650X550
700X600X300	1.2	1.2	2	D	2	650X550

JXF Waterproof Panel Board



Size HXWXD/mm	Thickness			Bottom hole size	Lock QTY	Mounting plate size LXM/mm
	Door	Body	M.P			
800X600X200	1.5	1.5	2	D	2	750X550
800X600X250	1.5	1.5	2	D	2	750X550
800X600X300	1.5	1.5	2	D	2	750X550
800X600X400	1.5	1.5	2	D	2	750X550
800X800X200	1.5	1.5	2	F	2	750X750
800X800X250	1.5	1.5	2	F	2	750X750
800X800X300	1.5	1.5	2	F	2	750X750
800X800X400	1.5	1.5	2	F	2	750X750
1000X600X200	1.5	1.5	2	D	3	950X550
1000X600X250	1.5	1.5	2	D	3	950X550
1000X600X300	1.5	1.5	2	D	3	950X550
1000X700X200	1.5	1.5	2	D	3	950X650
1000X700X250	1.5	1.5	2	D	3	950X650
1000X800X200	1.5	1.5	2	F	3	950X750
1000X800X250	1.5	1.5	2	F	3	950X750
1000X800X300	1.5	1.5	2	F	3	950X750
1000X800X400	1.5	1.5	2	F	3	950X750
1000X1000X250	1.5	1.5	2	G	3	950X950
1000X1000X300	1.5	1.5	2	G	3	950X950
1000X1000X400	1.5	1.5	2	G	3	950X950
1200X600X200	1.5	1.5	2	D	3	1150X550
1200X600X250	1.5	1.5	2	D	3	1150X550
1200X600X300	1.5	1.5	2	D	3	1150X550
1200X800X200	1.5	1.5	2	F	3	1150X750
1200X800X250	1.5	1.5	2	F	3	1150X750
1200X800X300	1.5	1.5	2	F	3	1150X750
1200X1000X250	1.5	1.5	2	G	3	1150X950
1200X1000X300	1.5	1.5	2	G	3	1150X950
1200X1000X400	1.5	1.5	2	G	3	1150X950
1200X1200X250	1.5	1.5	2	G	3	1150X1150
1200X1200X300	1.5	1.5	2	G	3	1150X1150
1200X1200X400	1.5	1.5	2	G	3	1150X1150
1400X600X300	1.5	1.5	2	D	3	1350X550
1400X800X300	1.5	1.5	2	F	3	1350X750
1400X800X400	1.5	1.5	2	F	3	1350X750
1400X1000X300	1.5	1.5	2	G	3	1350X950
1400X1000X400	1.5	1.5	2	G	3	1350X950
1400X1200X300	1.5	1.5	2	G	3	1350X1150



Fiberglass Box



Model	Dimension:W × H × D (mm)	Dimension:W × H × D (mm)	Weight(kg)	Description
AL-SMC-302514	300 × 250 × 140	350 × 300 × 190	3.5	Box Material:SMC Fix plate:steel
AL-SMC-403020	400 × 300 × 200	450 × 350 × 250	5.0	
AL-SMC-504020	500 × 400 × 200	550 × 450 × 250	8.0	
AL-SMC-604023	600 × 400 × 230	650 × 450 × 280	10.5	
AL-SMC-605023	600 × 500 × 230	650 × 550 × 280	14	
AL-SMC-806030	800 × 600 × 300	850 × 650 × 350	20	

Fix Plate

Model	Dimension:A (mm)	Dimension:B (mm)	Dimension:C (mm)	Dimension:D (mm)
AL-SMC-302514	268	213	248	175
AL-SMC-403020	358	260	338	222
AL-SMC-504020	158	360	438	322
AL-SMC-604023	558	360	538	322
AL-SMC-605023	558	460	538	422
AL-SMC-806030	754	556	734	518



Door

Model	Dimension:A (mm)	Dimension:B (mm)
AL-SMC-403020	366	258
AL-SMC-504020	466	358
AL-SMC-604023	566	358
AL-SMC-605023	566	458
AL-SMC-806030	766	658

